



SERIES VR778

Advanced Technology Logging & Archiving System

SPECIFICATIONS

Hardware

- Digital Non-Proprietary Platform
- Standalone - Front Panel Control w/Color LCD Display
- Network Server - Multiple Remote PCs Control
- Rack Mount
- Desktop
- Modular For Fast Simple Upgrades
- Internal Hard Disks - Multiple
- Archive Drives - Multiple
- O/S - Linux Operating From Flash Memory
- Rerecord - CD-R in Archive Drive
- USB Connectors

Front Panel

- 320X240 Color TFT LCD Screen
- Soft Keys
- Hard Keys
- Scroll/Click Wheel
- Keypad
- Speaker
- LED Indicators
- Line Out Jack
- Headphone Jack
- Volume Control

Record Channels

- 16 to 240 Analog
- 16 to 240 Digital Sets

Audio Compression Rates

13Kbs
16Kbs
32Kbs
64Kbs

Record Activation Selectable Per Channel

VOX
Hook Detect
Continuous
External

Record Connectivity

Analog - Telephone, Radio, Microphones Etc.
Digital Telephone Stations For Most PBX's.
Digital Telephone T1/E1/ISDN PRI Direct Interface

Archive Drives

9.4GB DVD-RAM
Removable 120GB Hard Disks
DDS-4 DAT

Archive Media

9.4GB DVD-RAM - @13Kbs = 1,540 Channel Hours
120GB Removable Hard Disk - @13Kbs = 19,600 Channel Hours
4mm DDS-4 DAT Tape @13Kbs = 3,300 Channel Hours

Standard On Line Hard Disks - Mirrored RAID 1

120GB - @13Kbs = 19,800 Channel Hours

Optional On Board Hard Disk Configurations

Size	Number	Total	RAID 5	Ch Hrs
120GB	4	480GB	360GB	59,400
250GB	4	1000MB	750GB	123,750
250GB	6	1500GB	1250GB	206,250

External MSU

Hard Disk Array

Power Supplies/Fan Assembly

Dual
Hot Swappable

Local System Access

Full System Control via Front Panel 320X240 Color LCD Graphical User Interface
w/4 Softkeys,4 Fixed Keys, Numeric Keypad and Cursor/Click Wheel.

Remote System Access

- Unlimited Number Network Connected Workstations with Eventide Call Browsers Installed.
- Up to 16 Simultaneous System Accesses
- Multi-channel Live Monitor Up to 8 Channels Simultaneously
- Multi-channel Play w/Talking Time/Date Up to 8 Channels Simultaneously
- Drag & Drop, and Email Recordings
- Call Record Database Queries
- Multi - System Manager
- Desktop Instant Recall at Attached PC Workstations

Database

- Powerful Relational Database for All Call Records

Search Parameters

- Time/Date
- CLID Phone Number
- Dialed Phone Number
- ANI Phone Number
- Channel Name
- Call Tag
- Call Direction
- Call Duration
- Incident Name
- ALI Data

Security

- User ID/Password to the Channel Level

Network Connectivity

- Ethernet: 100Mbps
- NICs: 1 or 2 Network Cards Supported
- Protocol: TCP/IP

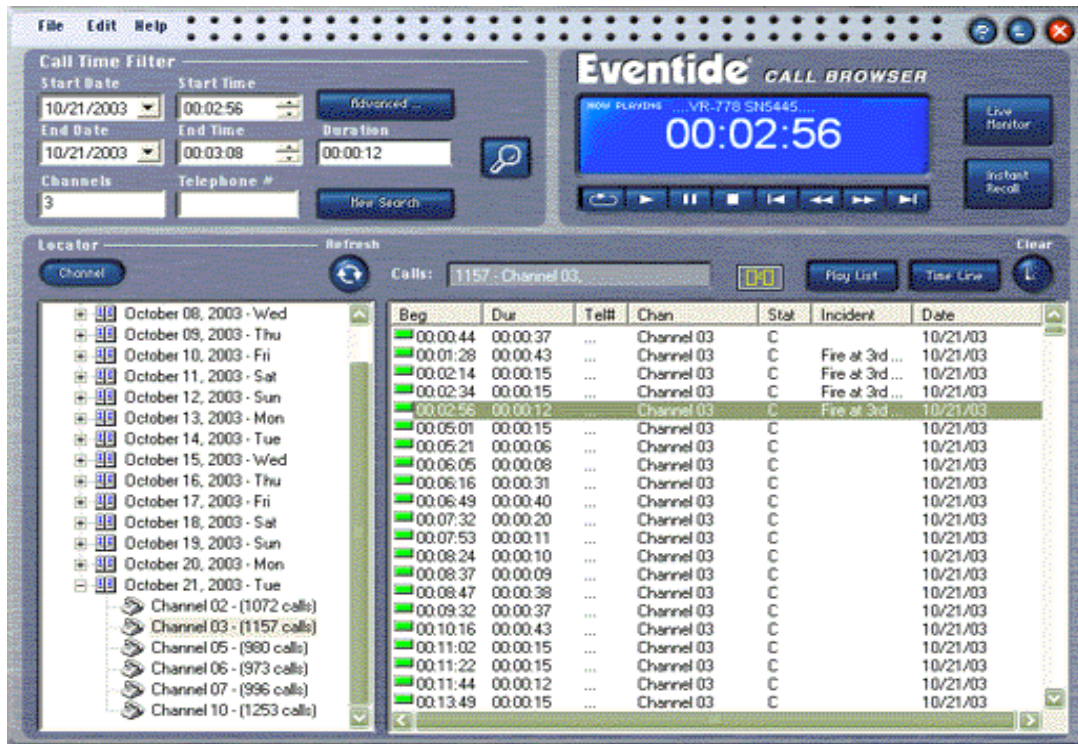
Physical

- Height: 7 Inches (4U)
- Width: 19 Inches
- Depth: 26 Inches
- Weight: 55 to 95 Pounds

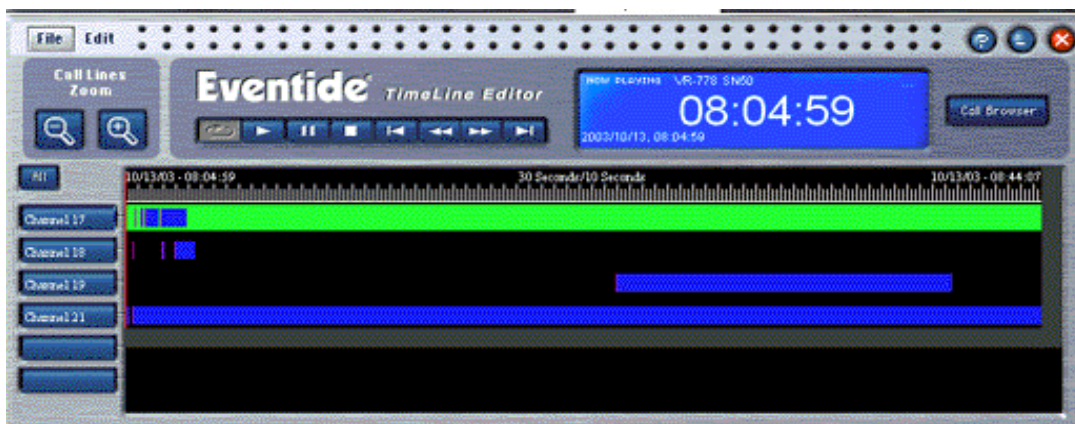
Power Requirements

- 90 to 130 VAC or 180 to 250 VAC 47 to 63 Hz
- 300 Watts @ 115 VAC

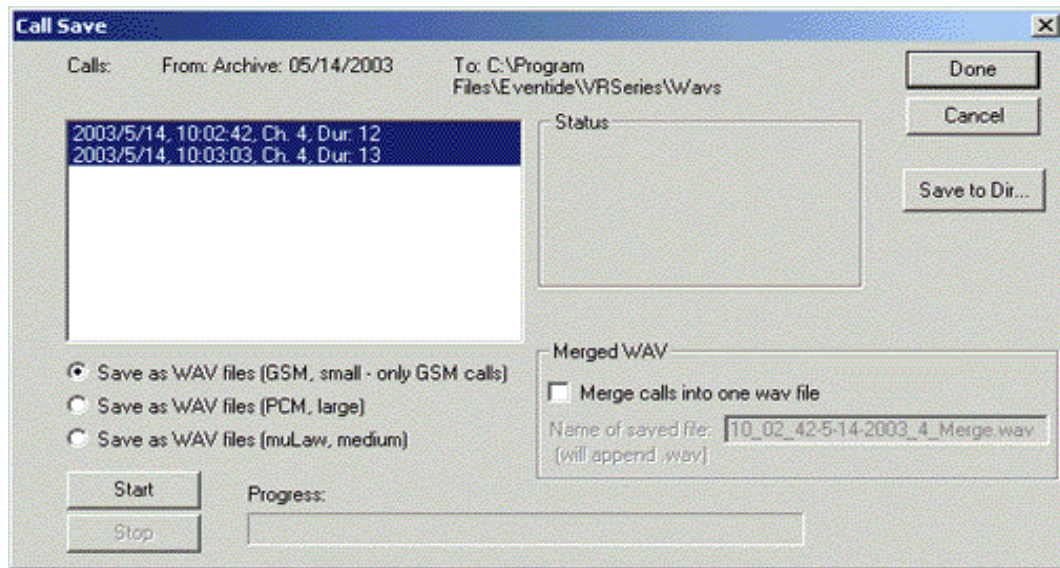
Sample Eventide VR Series Client Call Browser Screens



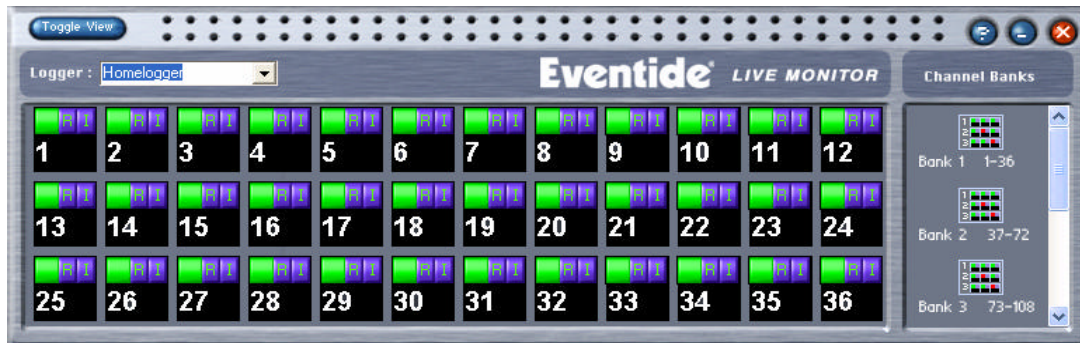
CALL BROWSER



TIME LINE EDITOR



CALL SAVE AS WAV FILES



LIVE MONITOR