



## **SERIES VR778**

### **Advanced Technology Logging & Archiving System**

## SPECIFICATIONS

### Hardware

- Digital Non-Proprietary Platform
- Standalone - Ready for Monitor, Keyboard, Mouse Local Control
- Optional Front Panel Control w/Color LCD Display
- Network Server - Multiple Remote PCs Control
- Rack Mount
- Desktop
- Modular For Fast Simple Upgrades
- Internal Hard Disks - Multiple
- Optional Hot Swap Hard Disks
- Archive Drives - Multiple
- O/S - Linux
- Rerecord - CD-R in Archive Drive
- USB Connectors
- External Archive drives via USB port(Thumb Drives,etc.)
- Remote Archiving to NAS via network
- Speaker
- LED Indicators
- Line Out Jack
- Headphone Jack
- Volume Control

### OPTIONAL Front Panel

- 320X240 Color TFT LCD Screen
- Soft Keys
- Hard Keys
- Scroll/Click Wheel
- Keypad

## Record Channels

- 8 to 192 Analog
- 8 to 192 Digital Sets
- 1 to 16 T1/E1/PRI Circuits

## Audio Compression Rates

- 13Kbs
- 16Kbs
- 32Kbs
- 64Kbs

## Record Activation Selectable Per Channel

- VOX
- Hook Detect
- Continuous
- External

## Record Connectivity

- Analog - Telephone, Radio, Microphones Etc.
- Digital Telephone Stations For Most PBX's.
- Digital Telephone T1/E1/ISDN PRI Direct Interface
- Digital Trunk Radio

## Archive Drives

- 9.4GB DVD-RAM
- Removable 250GB Hard Disks
- DDS-4 DAT

## Archive Media

- 9.4GB DVD-RAM - @13Kbs = 1,540 Channel Hours
- 250GB Removable Hard Disk - @13Kbs = 41,200 Channel Hours
- 4mm DDS-4 DAT Tape @13Kbs = 3,300 Channel Hours

## Standard On Line Hard Disks - Mirrored RAID 1

- 250GB - @13Kbs = 41,250 Channel Hours

### **Optional Hot Swap**

### Optional On Board Hard Disk Configurations

Size	Number	Total	RAID 5	Ch Hrs
250GB	4	1000MB	750GB	123,750
250GB	6	1500GB	1250GB	206,250

**400GB** Available

## Power Supplies/Fan Assembly

- Dual
- Hot Swappable

## Local System Access

- Monitor, Keyboard, Mouse
- Optional Front Panel Control w/Color LCD Display

## Remote System Access

- Unlimited Number Network Connected Workstations with Eventide VR Series Client Installed.
  - Up to 16+ Simultaneous System Accesses
  - Multi-channel Live Monitor Up to 8 Channels Simultaneously
  - Multi-channel Play w/Talking Time/Date Up to 8 Channels Simultaneously
  - Drag & Drop, and Email Recordings
  - Call Record Database Queries
  - Multi - System Manager
  - Desktop Instant Recall at Attached PC Workstations
  - Speed Control w/Pitch Correction
  - AGC Selectable on playback

## Database

- Powerful SQL Relational Database for All Call Records
- Programmable Retention
- ODBC Accessable

## Search Parameters

- Time/Date
- CID Phone Number
- Dialed Phone Number
- ANI Phone Number
- Channel Name
- Call Tag/Saved
- Call Direction
- Call Duration
- Incident Name
- ALI Data
- Annotations
- Trunk Radio Data

## Security

- User ID/Password to the Channel Level

## Network Connectivity

- Ethernet: 100Mbps
- NICs: 1 or 2 Network Cards Supported
- Protocol: TCP/IP

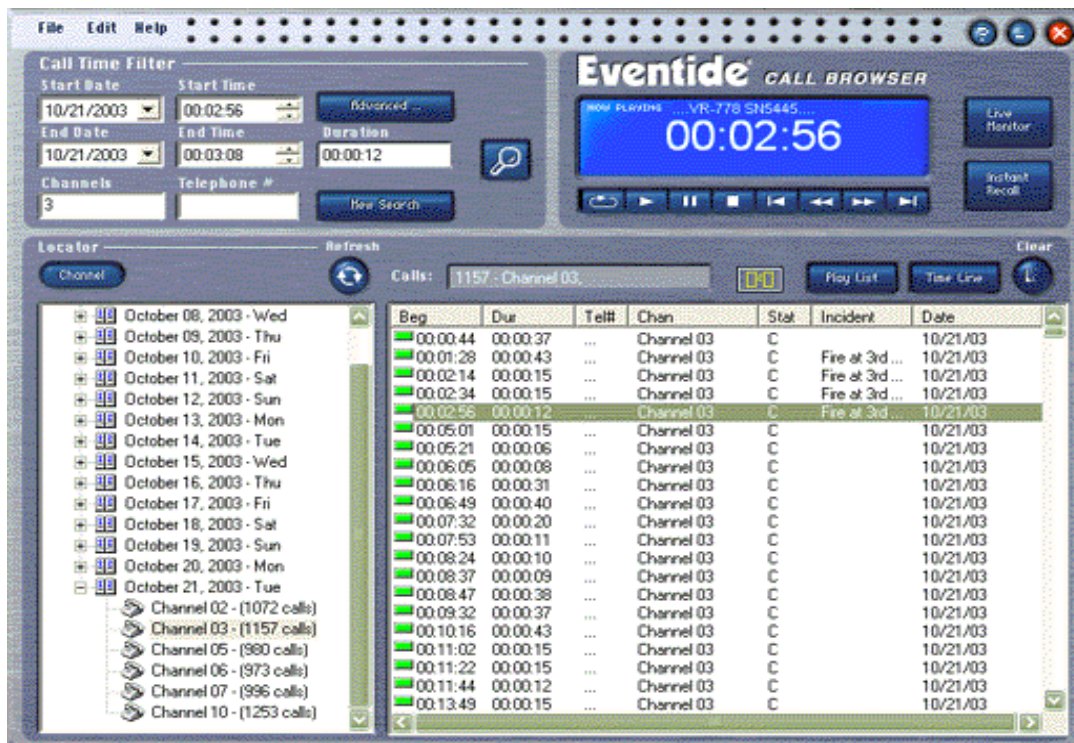
## Physical

- Height: 7 Inches (4U)
- Width: 19 Inches
- Depth: 26 Inches
- Weight: 55 to 95 Pounds

## Power Requirements

90 to 130 VAC or 180 to 250 VAC 47 to 63 Hz  
300 Watts @ 115 VAC

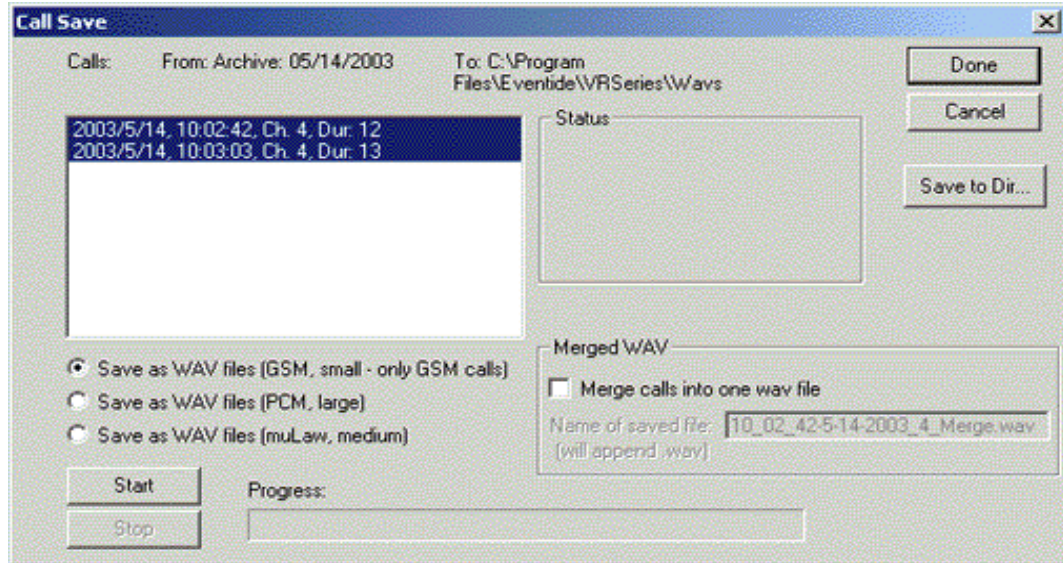
## Sample Eventide VR Series Client Call Browser Screens



CALL BROWSER



TIME LINE EDITOR



CALL SAVE AS WAV FILES



LIVE MONITOR